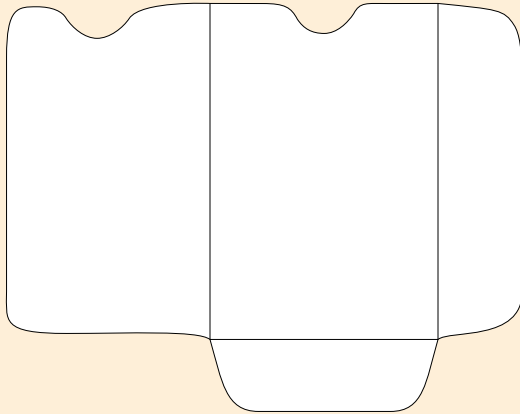


# Card Protector

## Art Setup Guidelines



### General:

All dies have a total of  $\frac{1}{4}$ " clearance surrounding the die lines. This ensures important objects do not fall off any edges in the cutting and folding processes.

### Bleed Margin:

The outer  $\frac{1}{8}$ " Bleed Margin is for images and solid colors that are meant to bleed off the die cut edges. All bleeds on folded edges must be expanded onto the opposing side a full  $\frac{1}{8}$ " to ensure a consistent folded bleed on all of the envelopes.

### Print Margin:

The inner  $\frac{1}{8}$ " Print Margin is for text and images that do not bleed. If text or an image goes beyond this point, there is a chance it could be cut off, or bleed onto the opposing side.

### Glue & Gum Knockouts:

Glue & Gum Knockouts must be kept free of print to ensure the adhesive will stick properly to the paper.

..... Flap Overlap Lines

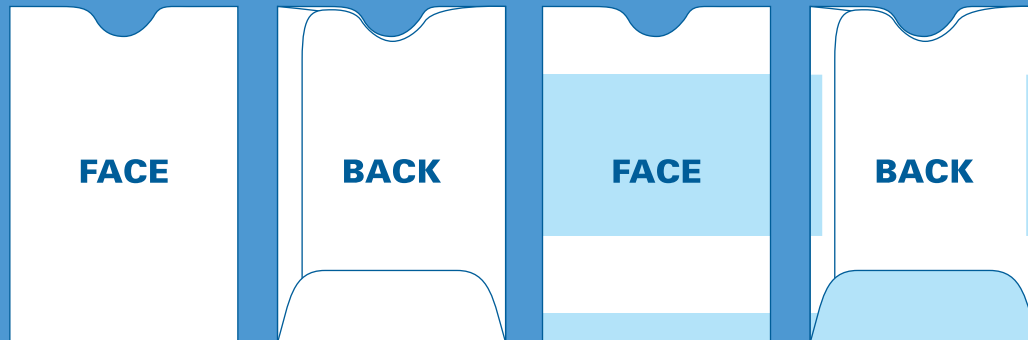
— Die Lines

 Bleed Margins

 Print Margins

 Document Area  
( = Die +  $\frac{1}{8}$ " on all sides )

### FOLDED VIEW



### BLEEDING FOLDED VIEW

Notes:  $\frac{1}{8}$ " bleed from face to back-bottom flap with a full bleed

